

Snowcrest Lodge

K I R K W O O D

Site Features

- On- mountain ski-in, ski-out location.
- Along the edge of Olympic ski run.
- Close proximity to Kirkwood Mountain Village.
- Dramatic Views of Red Cliffs, The Meadow and the mountain itself.

Residence Features

- Solid core, wood doors.
- Wood trim and base throughout.
- Dual glazed windows with wood finish interior.
- High efficiency forced air, gas heating system.
- Washer/ dryer hookups in units.
- Private Decks and/or balconies.
- Recessed lighting in kitchen and living room.
- Open stairway with wood railing on two story units.
- Cat-5 wiring for communications.

Kitchen

- Natural finish maple faced cabinets
- GE Profile appliances including side-by-side refrigerator/freezer, microwave oven, range or stovetop/oven combination and dishwasher.
- Kohler kitchen sink and faucet.
- 12" Granite tile countertop with 8" backsplash.
- Slate tile floor in kitchen and entryway.
- Recessed lighting.
- Under cabinet lighting.

Living/Dining Area

- Vaulted living room ceilings on second floor units.
- Wall to wall Berber type carpet.
- Recessed lighting.
- Hanging light fixture over dining area.
- Gas fireplace with slate tile surround.

4/10/00

Bathrooms

- Natural finish maple faced cabinets.
- Tile countertops.
- Kohler sinks and toilets with polished chrome faucets.
- Kohler tub or shower pan with tile surround.
- Tile floors.

Bedrooms

- Wall to wall Berber style carpet.
- Large closets with wood doors.
- Large windows or wood patio doors to deck.

Building/ Amenities

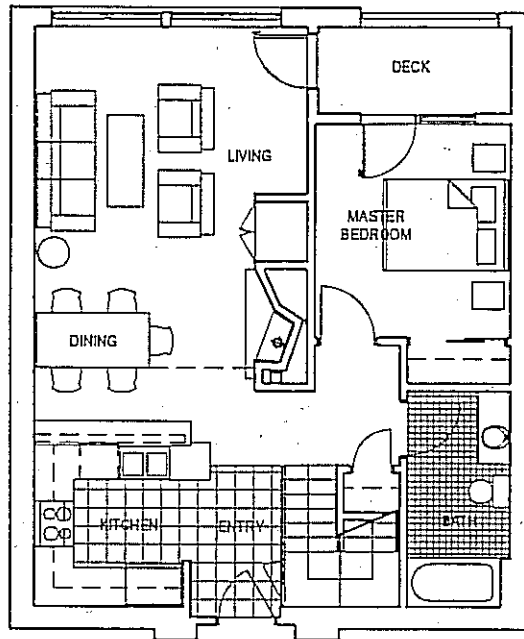
- 30 car parking garage with individual owners storage lockers.
- Automatic garage door for security.
- Snowmelt at garage entry for safety.
- Covered entryway off of street.
- Two story entry lobby.
- Spa room on second floor with views of Red Cliffs and Meadow.
- Private owners ski locker room.
- Large carpeted multipurpose room for HOA.

4/12/00

Snowcrest Lodge

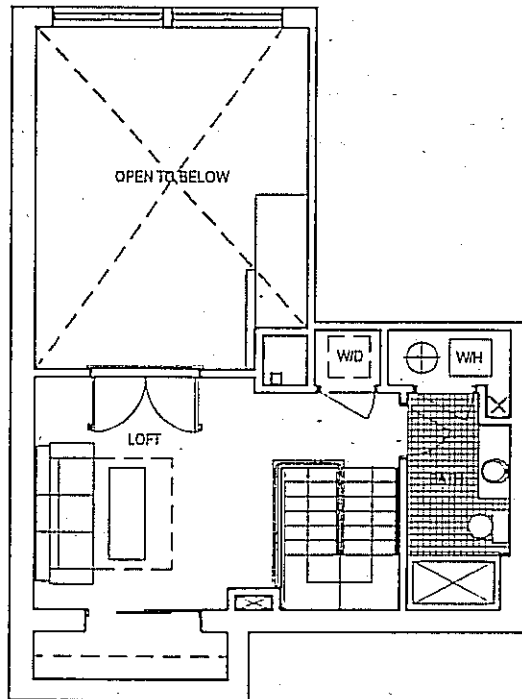
KIRKWOOD

UNITS 203, 204,
207, 208, 213, 214



UNITS 205, 206

1st Floor



2nd Floor

The plans and areas shown are preliminary and may vary in their final form.

